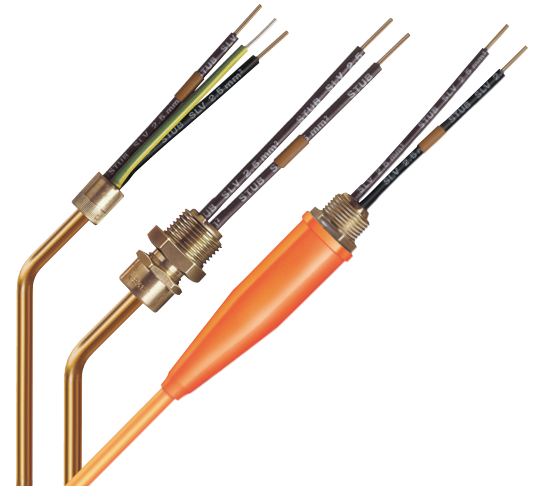




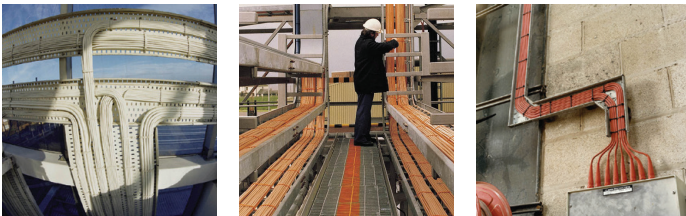
## PYRO MI THE ULTIMATE FIRE SURVIVAL MI WIRING CABLE SYSTEM FOR VERSATILITY AND ULTIMATE FIRE SURVIVAL PERFORMANCE

Pyro MI Cable Systems were installed when fire broke out in the Channel Tunnel in November 1996. Resisting extreme temperatures that destroyed concrete and welded rails, the Pyro MI Wiring Cable allowed emergency lighting to operate for the safe evacuation of passengers; proving its superior fire survival capability.



### PYRO MI CONSTRUCTION CHARACTERISTICS

- |                    |                        |
|--------------------|------------------------|
| Moving Walkways    | Dock and Harbour       |
| Car Parking        | Original Equipment     |
| Public Buildings   | Building Exteriors     |
| Metro Links        | Power Generating       |
| Hotels             | Escalators             |
| Shopping Complexes | Transport/Interchanges |
| Building Services  | Petrol Stations        |
| Offshore           | Petrochemicals         |
| Rail Tunnels       | Airport                |
| Road Tunnels       | Water Treatment        |



## CONNECT AND PROTECT

# MINERAL INSULATED WIRING CABLE SYSTEM

  
nvent

**PYROTENAX**

## PYRO MI RANGE

The standard range of Pyro MI Cable provides the ideal solution for almost all electrical circuits in the low voltage category.

Two voltage grades - 500 and 750 Volts, are available with conductors from 1.0 sq.mm to 240 sq.mm. A full range of complementary accessories and tools provides a complete wiring system supplied and supported by the "Genuine nVent PYROTENAX" component assurance.

## PYRO TWIST CABLES

Pyro Twist is a range of communication and signal cables for life preservation and integrated building management systems.

They have been developed from the proven characteristics of Pyro MI to maintain the security of vital signals in communication and data networks, particularly in hostile conditions.

## PYRO MI BENEFITS

- Pyro MI survives the fire test requirements for enhanced grade cables as defined in BS 5839: part 1.
- Peace of mind from the third party (LPCB) approval for categories C, W and Z in BS 6387.
- Also attains categories C, W and Z of BS 6387 with one single cable sample.

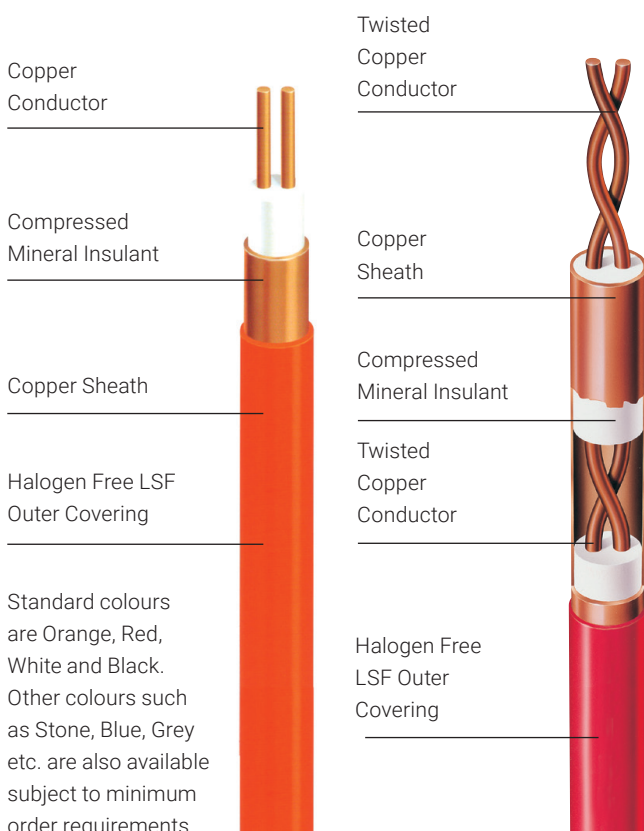
## PYRO MI CONSTRUCTION

With a basic inorganic construction of a copper sheath and conductors, together with a mineral insulant, the cable provides a unique combination of dependability, versatility and permanence.

This construction, with the melting points of 1083°C and 2800°C for the copper and the insulant respectively, provides the unsurpassed Fire Survival properties which enable the cable to continue to carry current at temperatures in excess of 1000°C.

## PYRO MI CONSTRUCTION CHARACTERISTICS

- Fireproof
- High Operating Temperatures
- Inherent Flameproof Barrier
- Zero Energy
- Non-Ageing
- Great Mechanical Strength
- Small Overall Diameter
- Pliable
- Wiring Cable and Conduit Combined
- Competitive Installed Cost
- High Degree of Electrical Screening
- Radiation Resistant
- Integral Earth Continuity
- High Corrosion Resistance
- Waterproof



### UNITED KINGDOM

Tel 0800 969 013  
Fax 0800 968 624  
salesthermalUK@nvent.com

### IRELAND

Tel 1800 654 241  
Fax 1800 654 240  
salesIE@nvent.com

### UAE

Tel +971 4 378 1700  
Fax +971 4 378 1777  
ntminfome@nvent.com

### NOIDA-INDIA

Tel +91.120.464.9500  
Fax +91.120.464.9548  
ntminfome@nvent.com

### MUMBAI-INDIA

Tel +91.22.6775.8800/01  
Fax +91.22.2556.1491  
ntminfome@nvent.com



Our powerful portfolio of brands:

[nVent.com](http://nVent.com)

CADDY ERICO HOFFMAN RAYCHEM SCHROFF TRACER