



**COMFORT YOU DESERVE**

FLOOR HEATING SYSTEMS

  
nVent

**NUHEAT**



# enjoy heated floors



nVent NUHEAT Electric Floor Heating Systems are ideal room specific heat source options for both new construction or renovation projects. These easy-to-install systems may be installed under tile, stone and laminate / engineered wood floors.

A cost-effective heating solution, NUHEAT Electric Floor Heating Systems are inexpensive to install and do not require ductwork or any additional equipment to operate. NUHEAT Electric Floor Heating Systems offer an entirely maintenance-free heating alternative—with no cold spots.

View the full list of our standard and custom mats at the end of this catalog or visit [nVent.com/NUHEAT](http://nVent.com/NUHEAT)



# Mats

Pre-built like an electric blanket, NUHEAT Mat offers a perfect fit every time. This distinct floor heating system is a cost-effective, maintenance-free heating alternative.

Visit [nVent.com/NUHEAT](http://nVent.com/NUHEAT) to learn more why quality, speed, and ease of installation, make NUHEAT Mat the contractor's preferred choice.

## MAT FAST FACTS

- Installed under tile, marble, stone and laminate / engineered wood floors
- Custom mats available for rooms with curves and angles – custom manufactured in only 3 days!
- Available in over 70 standard off-the-shelf square and rectangular sizes
- Heats shower floors, shower benches and steam rooms
- Ideal for renovation or new construction
- Low operating cost
- 15 watts/ sq ft; 51 BTUs/ sq ft also available upon request
- Industry leading 25-year warranty

## MAT 3-STEP EASY INSTALLATION



1. Trowel thinset



2. Roll mat onto thinset



3. Trowel thinset and install flooring

## CUSTOM MAT MEASURING

Pick a corner of the room and use that as the starting point for your measurements. Remember that you must return to this starting point at the end of your measurements.

An online measuring tutorial is available at [nVent.com/NUHEAT](http://nVent.com/NUHEAT)

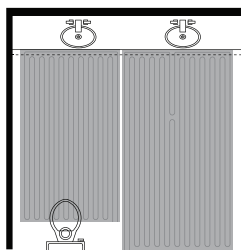
1. Pick a corner of the room and use that as the starting point for your measurements.
2. Measure and draw the walls of the room on paper and record the measurements.
3. Measure and draw the location of cabinets and vanities, make sure to take the measurement right up to the toe-kick.
4. Measure and draw the location of floor features such as vents and toilet drains (measure from the walls to the center of the toilet drain).
5. Indicate the thermostat location and voltage if known.

## ELECTRICAL DETAILS

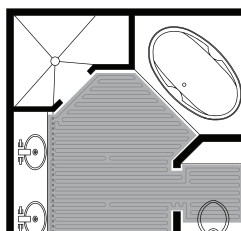
- 150 sq ft can be installed on a single 120V circuit
- 300 sq ft can be installed on a single 240V circuit
- All controls are equipped with ground fault circuit protection (G.F.C.I.)
- All thermostats come with a floor sensing probe
- Electrical installation instructions are available at [nVent.com/NUHEAT](http://nVent.com/NUHEAT)



# Mats



Standard mat layout




Custom mat layout

## HOW TO ORDER

1. Obtain an accurately measured floor plan including all perimeter dimensions and any vents or obstacles in the floor. Note the thermostat location.
2. Determine whether standard mats or custom mats are required (see Measuring guide on page 3).
3. If custom mats are required, email the design, including all customer and job information to [res.customercare@nVent.com](mailto:res.customercare@nVent.com).
4. Upon design confirmation, you will receive a quote for your project (quote turnaround is typically 24 hrs).
5. Have customer confirm all dimensions and have customer sign off on their design. Submit a purchase order. Mats will arrive 6–7 business days from the time order is placed.

## OPERATING COST EXAMPLE

ROOM		ft <sup>2</sup>	\$*
Bathroom	5.5 hrs	50	17¢
Kitchen	7.5 hrs	150	70¢
Living Room	7.5 hrs	200	94¢

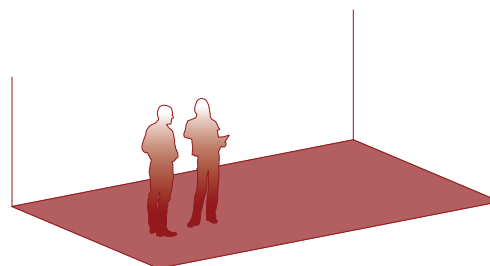
\* Average winter operating cost. Based on US Energy Information Administration 2012 national average of \$ 0.12/ kWh and modern insulation standards

## SHOWER MATS

The NUHEAT Shower Mat—the newest addition to the NUHEAT Standard Mat family. Easily installed in all types of shower bases, the NUHEAT Shower Mat is the perfect complement to the traditional floor heating system, creating a seamless, luxurious in-home spa.

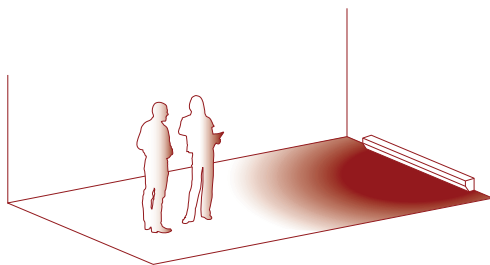
Complete with extra long 22' cold leads, the shower mat still comes with the same promise—easy installation with even, consistent heat. Like all NUHEAT Mats, the NUHEAT Shower Mat can be controlled using a programmable thermostat to accommodate your daily shower schedule.

## ROOM HEAT EXAMPLE



**NUHEAT MATS**  
BTUS/SQ FT

**41**



**BASEBOARD  
HEATER**  
BTUS/SQ FT

**34**

The QuickNet Floor Heating System includes a blue heating cable attached to an adhesive-backed red fiberglass mesh that allows for simple roll-out installation without worrying about heating cable spacing.

View the full list of our QuickNet Floor Heating System at the end of this catalog or visit [nVent.com/NUHEAT](http://nVent.com/NUHEAT)

## QUICKNET FAST FACTS

- Heats tile, stone and laminate/engineered wood floors
- Suitable for wet environments such as showers and steam rooms
- Compatible with all standard sub-flooring materials
- Low 3/16 inch (3mm) profile
- Pre-terminated for use with 120V, 208V, and 240V
- Zero EMF (electromagnetic field) cable design
- Available in various lengths of 20-inch widths

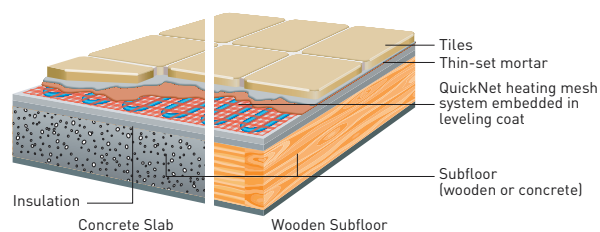
## ORDERING DETAILS

1. Select the mesh floor heating system that is no larger than the heated area. (The heated area is the area of the floor that does not include permanent fixtures such as cabinets, toilets, sinks or tubs.)
2. The selected mesh system can be configured on the jobsite to fit the shape of the area to be heated.

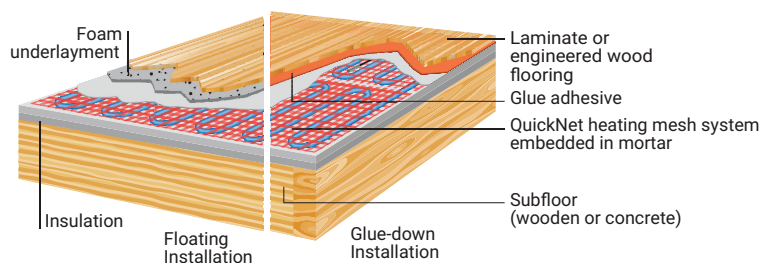
## ELECTRICAL DETAILS

- Available in 120V, 208V, and 240V
- All controls are equipped with ground fault circuit protection (G.F.C.I.)
- All thermostats come with a floor sensing probe

## TYPICAL TILE INSTALLATION



## TYPICAL LAMINATE & ENGINEERED WOOD INSTALLATION



# Cable

NUHEAT Cable is an ideal room specific heat source option for kitchens, bathrooms and other spaces where on-site adjustments are required.

View the full list of our cable system at the end of this catalog or visit [nVent.com/NUHEAT](http://nVent.com/NUHEAT)

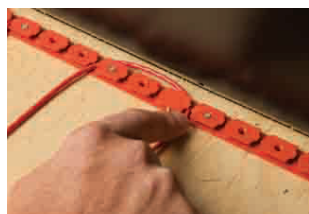
## CABLE FAST FACTS

- Heats tile, stone and laminate/engineered wood floors
- Suitable for wet environments such as showers and steam rooms
- Available up to 120 sq ft in 120V and 240 sq ft in 240V
- Redesigned, thinner cold-lead and factory splice
- New mid-point marker on heating cable
- Zero EMF (electromagnetic field) cable design
- Spacing options for 12 or 15 watts/sq ft
- Industry leading 25-year warranty

## HOW TO ORDER

1. Calculate the square footage of the heated area (measuring instructions available at [nVent.com/NUHEAT/floor-heating/cable-system/#calculate-sq-ft](http://nVent.com/NUHEAT/floor-heating/cable-system/#calculate-sq-ft)).
2. Determine the proper cable kit for your project.
3. Email a purchase order to [res.customercare@nvent.com](mailto:res.customercare@nvent.com) or fax to 1.604.529.4404.
4. If unsure which floor heating solution is best, contact the NUHEAT Customer Care Team and a representative will recommend the appropriate cable kits and controls for your project.

## CABLE 3-STEP EASY INSTALLATION



1. Trowel thinset



2. Apply self-leveler



3. Trowel thinset & install tile

## ELECTRICAL DETAILS

- Largest 120V kit covers 120 sq ft and largest 240V kit covers 240 sq ft, producing 41 BTUs per sq ft
- All controls are equipped with ground fault circuit protection (G.F.C.I.)
- All thermostats come with a floor sensing probe



# Cable and Membrane

## NUHEAT CABLE AND UNCOUPLING MEMBRANE

Offering the ultimate in installation flexibility and performance, NUHEAT Cable Floor Heating Systems can now be installed using an uncoupling membrane.

### IDEAL HEAT SOURCE FOR NEW CONSTRUCTIONS OR RENOVATIONS

- Installers can vary the spacing of the heating cable to deliver up to 15 watts/sq ft depending on the application (eg. primary heat source applications)
- A higher watt density means higher maximum floor temperatures and faster heat-up times
- Available in 120V and 240V



## DITRA-HEAT™ MEMBRANE NUHEAT CABLE KIT

### 120 VOLT CABLE

Model #	Square Foot Coverage			Length (ft)	Total Watts
	2/3/2 pillars* 12 watts/ sq ft	3 pillars* 10 watts/sq ft	2 pillars* 15 watts/ sq ft		
N1C008	7	8	6	29	80
N1C012	12	14	10	47	138
N1C015	14	16	12	57	170
N1C025	24	28	20	98	299
N1C030	29	35	24	120	343
N1C040	36	43	29	148	442
N1C050	46	54	37	188	562
N1C060	57	68	46	234	719
N1C070	64	77	52	265	810
N1C080	77	92	63	318	947
N1C085	81	97	66	334	1021
N1C095	92	109	74	377	1161
N1C110	103	123	83	423	1299
N1C120	115	138	93	474	1461

### 240 VOLT CABLE

Model #	Square Foot Coverage			Length (ft)	Total Watts
	2/3/2 pillars* 12 watts/sq ft	3 pillars* 10 watts/sq ft	2 pillars* 15 watts/sq ft		
N2C015	14	16	11	56	165
N2C020	20	23	16	80	224
N2C025	25	29	20	102	302
N2C035	33	39	27	136	403
N2C045	43	51	35	178	523
N2C055	50	60	41	207	632
N2C065	61	72	49	250	742
N2C070	67	80	55	277	842
N2C085	81	97	66	334	1020
N2C090	87	104	71	358	1102
N2C100	96	114	77	393	1211
N2C120	115	137	93	472	1427
N2C135	129	154	104	529	1621
N2C145	137	163	110	561	1704
N2C160	153	183	124	630	1914
N2C170	162	193	131	665	2054
N2C190	185	220	149	757	2314
N2C215	207	247	167	849	2589
N2C240	233	278	187	953	2905

\*pillars of the uncoupling membrane

Ditra-Heat™ trademarks are owned by Schluter-Systems KG, which is not affiliated with NUHEAT.

# Thermostats



The SIGNATURE is the industry's first WiFi-enabled floor heating thermostat. This universally compatible thermostat provides an easy set-up wizard and wireless access to a full suite of features such as an energy usage display, weather forecast and temperature controls, all from an iOS/ Android app or web browser.

## SIGNATURE

WiFi-Enabled Floor Heating Thermostat

- WiFi-enabled
- 3.5" Color touchscreen
- Energy usage monitor
- 7-day programmability
- Dual-voltage (120V/240V)



## HOME

Universal Floor Heating Thermostat

- 3.5" Color touchscreen
- Energy usage monitor
- 7-day programmability
- Dual-voltage (120V/240V)



## HARMONY

Designer Inspired Thermostat

- Flush mounts behind any double-gang wall plate
- 7-day programmability
- Dual-voltage (120V/240V)



## ELEMENT

Non-Programmable Control

- Manual temperature control
- Dual-voltage (120V/240V)

# marketing support

Offering ongoing support to our distributors is a key priority. We proudly offer comprehensive marketing support tools in an effort to enhance product knowledge, exposure and ultimately to drive sales.

We offer:

- Technical Services
- Measuring and Design Support
- Strategic Planning



## POPULAR PROMOTIONAL ITEMS

Item	Price
Mat Brochure	\$0.11
Cable Brochure	\$0.19
Installation Guide	\$0.58

## POINT OF PURCHASE DISPLAYS

Item	Price
"Heat Your Tile" Decal, Pack of 60	\$8.12
Brochure Holder - Heat Source	\$25.75
Thermostat Display - Graphic	\$25.75
Thermostat Display with boxes	\$42.00
Thermostat Display with working SIGNATURE	\$148.25
Working Countertop Display	\$94.20

## STAFF TRAINING & SALES TOOLS

Item	Price
Non-working Mat Sample	\$8.77
Step Board	\$25.00
NUHEAT Cable used with Membrane	\$0.56

## WEBSITE & SOCIAL MEDIA

Item	Price
USB stick (includes looping video, product images and website information)	\$5.35

# Canada Floor Heating Price List

## 120 VOLT CUSTOM MAT

Model #	Dimensions (sq ft range)	Price (CAD)
X1M008010	7.5 - 10	\$380.00
X1M011020	11 - 20	\$440.00
X1M021030	21 - 30	\$590.00
X1M031040	31 - 40	\$690.00
X1M041050	41 - 50	\$830.00
X1M051060	51 - 60	\$970.00
X1M061070	61 - 70	\$1,070.00
X1M071080	71 - 80	\$1,180.00
X1M081090	81 - 90	\$1,300.00
X1M091100	91 - 100	\$1,440.00

## 240 VOLT CUSTOM MAT

Model #	Dimensions (sq ft range)	Price (CAD)
X2M015020	15 - 20	\$460.00
X2M021030	21 - 30	\$590.00
X2M031040	31 - 40	\$690.00
X2M041050	41 - 50	\$830.00
X2M051060	51 - 60	\$970.00
X2M061070	61 - 70	\$1,070.00
X2M071080	71 - 80	\$1,180.00
X2M081090	81 - 90	\$1,300.00
X2M091100	91 - 100	\$1,440.00
X2M101110	101 - 110	\$1,580.00
X2M111120	111 - 120	\$1,730.00
X2M121130	121 - 130	\$1,850.00
X2M131140	131 - 140	\$1,890.00
X2M141150	141 - 150	\$1,960.00
X2M151160	151 - 160	\$2,020.00
X2M161170	161 - 170	\$2,060.00
X2M171180	171 - 180	\$2,100.00
X2M181190	181 - 190	\$2,220.00
X2M191200	191 - 200	\$2,340.00

## 120 VOLT QUICKNET MESH

Model #	Dimensions (sq ft)*	Price (CAD)
QUICKNET-010X-1	20" x 6.2'	\$154.13
QUICKNET-015X-1	20" x 9.2'	\$191.63
QUICKNET-020X-1	20" x 12.1'	\$229.13
QUICKNET-025X-1	20" x 15.1'	\$266.72
QUICKNET-030X-1	20" x 18.4'	\$304.31
QUICKNET-035X-1	20" x 21.3'	\$340.30
QUICKNET-040X-1	20" x 24.3'	\$376.27
QUICKNET-045X-1	20" x 27.5'	\$410.60
QUICKNET-050X-1	20" x 30.5'	\$444.94
QUICKNET-060X-1	20" x 36.4'	\$524.94
QUICKNET-070X-1	20" x 42.7'	\$596.23
QUICKNET-080X-1	20" x 48.9'	\$669.13
QUICKNET-090X-1	20" x 55'	\$753.43
QUICKNET-100X-1	20" x 61'	\$828.52

## 240 VOLT QUICKNET MESH\*\*

Model #	Dimensions (sq ft range)*	Price (CAD)
QUICKNET-050X-2	20" x 30.5'	\$456.60
QUICKNET-060X-2	20" x 36.4'	\$536.60
QUICKNET-080X-2	20" x 48.9'	\$680.80
QUICKNET-100X-2	20" x 61'	\$840.18

### KITS DO NOT COME WITH THERMOSTATS

\* Mat can be customized to fit the shape of the area to be heated

\*\* 240V kits are compatible with 208V power output

# Canada Floor Heating Price List

## 120 VOLT STANDARD MATS

Model #	Dimensions (inches)	Dimensions (feet)	Price (CAD)	Amps
F1006	40"x27"	3'4" x 2'3"	\$214.00	0.8
F1008	40"x32"	3'4" x 2'8"	\$223.00	0.9
F1010	40"x40"	3'4" x 3'4"	\$236.00	1.1
F1012	40"x48"	3'4" x 4'	\$254.00	1.3
F1206	48"x24"	4' x 2'	\$217.00	0.8
F1208	48"x30"	4' x 2.5'	\$232.00	1.0
F1209	48"x36"	4' x 3'	\$243.00	1.2
F1212	48"x48"	4' x 4'	\$290.00	1.6
F1506	60"x24"	5' x 2'	\$232.00	1.0
F1508	60"x30"	5' x 2.5'	\$249.00	1.3
F1509	60"x36"	5' x 3'	\$276.00	1.5
F1510	60"x42"	5' x 3.5'	\$298.00	1.8
F1512	60"x48"	5' x 4'	\$329.00	2.0
F1515	60"x60"	5' x 5'	\$381.00	2.5
F1806	72"x24"	6' x 2'	\$243.00	1.2
F1808	72"x30"	6' x 2.5'	\$276.00	1.5
F1809	72"x36"	6' x 3'	\$309.00	1.8
F1810	72"x42"	6' x 3.5'	\$344.00	2.1
F1812	72"x48"	6' x 4'	\$371.00	2.4
F1815	72"x60"	6' x 5'	\$423.00	3.0
F1818	72"x72"	6' x 6'	\$453.00	3.6
F2106	84"x24"	7' x 2'	\$258.00	1.4
F2108	84"x30"	7' x 2.5'	\$302.00	1.8
F2109	84"x36"	7' x 3'	\$344.00	2.1
F2110	84"x42"	7' x 3.5'	\$375.00	2.5
F2112	84"x48"	7' x 4'	\$408.00	2.8
F2115	84"x60"	7' x 5'	\$445.00	3.5
F2118	84"x72"	7' x 6'	\$511.00	4.2
F2121	84"x84"	7' x 7'	\$571.00	4.9

Model #	Dimensions (inches)	Dimensions (feet)	Price (CAD)	Amps
F2506	96"x24"	8' x 2'	\$293.00	1.6
F2508	96"x30"	8' x 2.5'	\$329.00	2.0
F2509	96"x36"	8' x 3'	\$371.00	2.4
F2510	96"x42"	8' x 3.5'	\$408.00	2.8
F2512	96"x48"	8' x 4'	\$425.00	3.2
F2515	96"x60"	8' x 5'	\$487.00	4.0
F2518	96"x72"	8' x 6'	\$560.00	4.8
F2521	96"x84"	8' x 7'	\$648.00	5.6
F2525	96"x96"	8' x 8'	\$695.00	6.4
F2706	108"x24"	9' x 2'	\$309.00	1.8
F2708	108"x30"	9' x 2.5'	\$351.00	2.3
F2709	108"x36"	9' x 3'	\$395.00	2.7
F2710	108"x42"	9' x 3.5'	\$423.00	3.2
F2712	108"x48"	9' x 4'	\$453.00	3.6
F2715	108"x60"	9' x 5'	\$541.00	4.5
F2718	108"x72"	9' x 6'	\$626.00	5.4
F2721	108"x84"	9' x 7'	\$686.00	6.3
F2725	108"x96"	9' x 8'	\$743.00	7.2
F2727	108"x108"	9' x 9'	\$814.00	8.1
F3006	118"x24"	10' x 2'	\$324.00	2.0
F3008	118"x30"	10' x 2.5'	\$375.00	2.5
F3009	118"x36"	10' x 3'	\$417.00	3.0
F3010	118"x42"	10' x 3.5'	\$439.00	3.4
F3012	118"x48"	10' x 4'	\$485.00	3.9
F3015	118"x60"	10' x 5'	\$571.00	4.9
F3018	118"x72"	10' x 6'	\$670.00	5.9
F3021	118"x84"	10' x 7'	\$726.00	6.9
F3025	118"x96"	10' x 8'	\$800.00	7.9
F3027	118"x108"	10' x 9'	\$882.00	8.9
F3030	118"x116"	10' x 10'	\$944.00	9.5

## SHOWER MAT

Model #	Description	Price (CAD)	Amps
F032032-S	Shower Mat - 120V (32"x32" with 22' cold leads)	\$199.00	0.7

# Canada Floor Heating Price List

## 240 VOLT STANDARD MATS

Model #	Dimensions (inches)	Dimensions (feet)	Price (CAD)	Amps
G1509	60"X36"	5' x 3'	\$276.00	0.8
G1510	60"X42"	5' x 3.5'	\$298.00	0.9
G1512	60"X48"	5' x 4'	\$329.00	1.0
G1515	60"X60"	5' x 5'	\$381.00	1.3
G1808	72"X30"	6' x 2.5'	\$276.00	0.8
G1809	72"X36"	6' x 3'	\$309.00	0.9
G1810	72"X42"	6' x 3.5'	\$344.00	1.1
G1812	72"X48"	6' x 4'	\$371.00	1.2
G1815	72"X60"	6' x 5'	\$423.00	1.5
G1818	72"X72"	6' x 6'	\$453.00	1.8
G2106	84"X24"	7' x 2'	\$258.00	0.7
G2108	84"X30"	7' x 2.5'	\$302.00	0.9
G2109	84"X36"	7' x 3'	\$344.00	1.1
G2110	84"X42"	7' x 3.5'	\$375.00	1.2
G2112	84"X48"	7' x 4'	\$408.00	1.4
G2115	84"X60"	7' x 5'	\$445.00	1.8
G2118	84"X72"	7' x 6'	\$511.00	2.1
G2121	84"X84"	7' x 7'	\$571.00	2.5
G2506	96"X24"	8' x 2'	\$293.00	0.8
G2508	96"X30"	8' x 2.5'	\$329.00	1.0
G2509	96"X36"	8' x 3'	\$371.00	1.2
G2510	96"X42"	8' x 3.5'	\$408.00	1.4
G2512	96"X48"	8' x 4'	\$425.00	1.6
G2515	96"X60"	8' x 5'	\$487.00	2.0
G2518	96"X72"	8' x 6'	\$560.00	2.4
G2521	96"X84"	8' x 7'	\$648.00	2.8
G2525	96"X96"	8' x 8'	\$695.00	3.2

Model #	Dimensions (inches)	Dimensions (feet)	Price (CAD)	Amps
G2706	108"X24"	9' x 2'	\$309.00	0.9
G2708	108"X30"	9' x 2.5'	\$351.00	1.1
G2709	108"X36"	9' x 3'	\$395.00	1.4
G2710	108"X42"	9' x 3.5'	\$423.00	1.6
G2712	108"X48"	9' x 4'	\$453.00	1.8
G2715	108"X60"	9' x 5'	\$541.00	2.3
G2718	108"X72"	9' x 6'	\$626.00	2.7
G2721	108"X84"	9' x 7'	\$686.00	3.2
G2725	108"X96"	9' x 8'	\$743.00	3.6
G2727	108"X108"	9' x 9'	\$814.00	4.1
G3006	118"X24"	10' x 2'	\$324.00	1.0
G3008	118"X30"	10' x 2.5'	\$375.00	1.2
G3009	118"X36"	10' x 3'	\$417.00	1.5
G3010	118"X42"	10' x 3.5'	\$439.00	1.7
G3012	118"X48"	10' x 4'	\$485.00	2.0
G3015	118"X60"	10' x 5'	\$571.00	2.5
G3018	118"X72"	10' x 6'	\$670.00	3.0
G3021	118"X84"	10' x 7'	\$726.00	3.4
G3025	118"X96"	10' x 8'	\$800.00	3.9
G3027	118"X108"	10' x 9'	\$882.00	4.4
G3030	118"X116"	10' x 10'	\$944.00	4.8
G144036	144" x 36"	12' x 3'	\$523.00	1.8
G144060	144" x 60"	12' x 5'	\$782.00	3.0
G144072	144" x 72"	12' x 6'	\$946.00	3.6
G144096	144" x 96"	12' x 8'	\$1,195.00	4.8
G144108	144" x 108"	12' x 9'	\$1,325.00	5.4
G144120	144" x 120"	12' x 10'	\$1,459.00	6.0
G144140	144" x 140"	12' x 12'	\$1,638.00	7.0
G168096	168" x 96"	14' x 8'	\$1,419.00	5.6
G168108	168" x 108"	14' x 9'	\$1,549.00	6.3
G168120	168" x 120"	14' x 10'	\$1,638.00	7.0
G168140	168" x 140"	14' x 12'	\$1,837.00	8.2
G240120	240" x 120"	20' x 10'	\$2,160.00	10.0

NUHEAT reserves the right to change specifications without prior notice. Our complete Terms and Conditions of Sale can be found at [nVent.com/NUHEAT](http://nVent.com/NUHEAT)

# Canada Floor Heating Price List

## 120 VOLT CABLE

Model #	Description	Amps	Length (ft) Standard	Square Foot Coverage		Price (CAD)
				Standard Spacing*	Alternate Spacing**	
N1C008	8 sq ft Kit 120V	0.7	29	8	6	\$236.90
N1C012	12 sq ft Kit 120V	1.2	47	12	9	\$247.20
N1C015	15 sq ft Kit 120V	1.4	57	15	12	\$278.10
N1C025	25 sq ft Kit 120V	2.5	98	25	20	\$319.30
N1C030	30 sq ft Kit 120V	2.9	120	30	25	\$339.90
N1C040	40 sq ft Kit 120V	3.7	148	40	30	\$381.10
N1C050	50 sq ft Kit 120V	4.7	188	50	40	\$422.30
N1C060	60 sq ft Kit 120V	6.0	234	60	50	\$473.80
N1C070	70 sq ft Kit 120V	6.8	265	70	55	\$535.60
N1C080	80 sq ft Kit 120V	7.9	318	80	65	\$556.20
N1C085	85 sq ft Kit 120V	8.5	334	85	70	\$576.80
N1C095	95 sq ft Kit 120V	9.7	377	95	80	\$618.00
N1C110	110 sq ft Kit 120V	10.8	423	110	90	\$690.10
N1C120	120 sq ft Kit 120V	12.2	474	120	100	\$751.90

## 240 VOLT CABLE

Model #	Description	Amps	Length (ft) Standard	Square Foot Coverage		Price (CAD)
				Standard Spacing*	Alternate Spacing**	
N2C015	15 sq ft Kit 240V	0.7	56	15	12	\$236.90
N2C020	20 sq ft Kit 240V	0.9	80	20	15	\$288.40
N2C025	25 sq ft Kit 240V	1.3	102	25	20	\$329.60
N2C035	35 sq ft Kit 240V	1.7	136	35	30	\$370.80
N2C045	45 sq ft Kit 240V	2.2	178	45	35	\$401.70
N2C055	55 sq ft Kit 240V	2.6	207	55	45	\$432.60
N2C065	65 sq ft Kit 240V	3.1	250	65	50	\$473.80
N2C070	70 sq ft Kit 240V	3.5	277	70	60	\$504.70
N2C085	85 sq ft Kit 240V	4.3	334	85	70	\$566.50
N2C090	90 sq ft Kit 240V	4.6	358	90	75	\$576.80
N2C100	100 sq ft Kit 240V	5.0	393	100	85	\$638.60
N2C120	120 sq ft Kit 240V	5.9	472	120	100	\$690.10
N2C135	135 sq ft Kit 240V	6.8	529	135	110	\$751.90
N2C145	145 sq ft Kit 240V	7.1	561	145	120	\$793.10
N2C160	160 sq ft Kit 240V	8.0	630	160	130	\$844.60
N2C170	170 sq ft Kit 240V	8.6	665	170	140	\$865.20
N2C190	190 sq ft Kit 240V	9.6	757	190	160	\$988.80
N2C215	215 sq ft Kit 240V	10.8	849	215	180	\$1,050.60
N2C240	240 sq ft Kit 240V	12.1	953	240	200	\$1,174.20

For most installations, standard 3" spacing (12 watts/Sq Ft) is sufficient. For installations with high heat loss, alternating 3"/2" spacing (15 watts/Sq Ft) may be used.

\* 3" spacing - 12 watts/ Sq Ft      \*\* Alternating 3"/2" spacing - 15 watts/ Sq Ft

NUHEAT reserves the right to change specifications without prior notice. Our complete Terms and Conditions of Sale can be found at [nVent.com/NUHEAT](http://nVent.com/NUHEAT)

# Canada Floor Heating Price List

## THERMOSTATS

Part #	Description	Price (CAD)
AC0055	SIGNATURE WiFi Touchscreen Programmable Dual-Voltage Thermostat	\$265.00
AC0056	HOME Touchscreen Programmable Dual-Voltage Thermostat	\$195.00
AC0057	Element Non-programmable Dual-Voltage Thermostat	\$110.00
AC0037	Harmony Programmable Dual-Voltage Thermostat	\$175.00

## MISCELLANEOUS MATERIALS - 120 VOLT

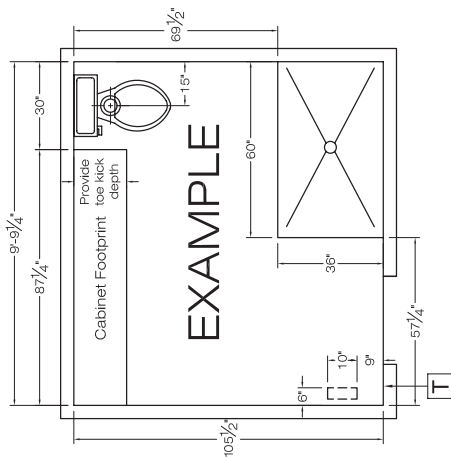
Part #	Description	Price (CAD)
AC0006	Relay 120V Input & Load Relay 25 Amps	\$60.00
AC0012	Extended Lead Length - Max 22ft (Standard 10' Lead Length)	\$8.00/ft
AC0014	Heating Wire Repair Kit	\$25.00
AC0016	Lead Wire Repair Kit	\$80.00
AC0008	Floor Sensing Probe	\$24.00
AC0100	Electric Fault Indicator	\$20.00

## MISCELLANEOUS MATERIALS - 240 VOLT

Part #	Description	Price (CAD)
AC0007	Relay 240V Input & Load Relay 25 Amps	\$60.00
AC0013	Extended Lead Length - Max 22ft (Standard 10' Lead Length)	\$8.00/ft
AC0014	Heating Wire Repair Kit	\$25.00
AC0017	Lead Wire Repair Kit	\$80.00
AC0008	Floor Sensing Probe	\$24.00
AC0100	Electric Fault Indicator	\$20.00

## CABLE ACCESSORIES

Part #	Description	Price (CAD)
AC0038	Extra Cable Guides - 12pcs	\$3.25
AC0040	NUHEAT Cable Repair Kit	\$30.00



## NUHEAT Mat Measuring Instructions

1. Pick a corner of the room and use that as the starting point for your measurements.
2. Measure and draw the walls of the room on paper and record the measurements.
3. Measure and draw the location of cabinets and vanities, make sure to take the measurement right up to the toe-kick.
4. Measure and draw the location of floor features such as vents and toilet drains (measure from the walls to the center of the toilet drain).
5. Indicate the thermostat location and voltage if known.

### Checklist

- ☐ Thermostat location
- ☐ Flooring type: ☐ Tile ☐ Laminate
- Voltage: ☐ 120V ☐ 240V ☐ Unknown
- ☐ Floor vent locations identified
- ☐ Obstructions shown - toilet, cabinets, plumbing, pony walls, etc.

### Notes

---



---



---



---

Toll Free: 1.800.778.9276  
 Fax: 604.529.4404  
 Email: [nuheatcustomercareteam@nvent.com](mailto:nuheatcustomercareteam@nvent.com)

## PRICING

Find trade pricing for all NUHEAT Standard Mats, Custom Mats and Cable.

## REQUEST A QUOTE

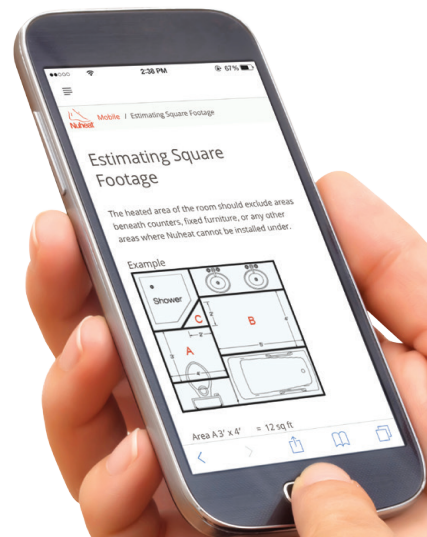
Request a quote from our wide range of floor heating products.

## ESTIMATING SQUARE FOOTAGE

This section will help you estimate your square footage and self-quote the area to be heated with a NUHEAT Custom Mat.

## HOW TO MEASURE

This section shows step by step instructions to create your production ready drawing.



## North America

Tel +1.800.545.6258

Fax +1.800.527.5703

res.customercare@nvent.com

Our powerful portfolio of brands:

**CADDY**

**ERICO**

**HOFFMAN**

**RAYCHEM**

**SCHROFF**

**TRACER**

